



Helene Laumeier & August Becker Family



Back Row: Esther, Homer, Mildred
Front Row: Harvey, Helene, August, Eunice

Kenneth Becker
Patricia Becker
Reinhardt

Neal Schnarre
Keith Schnarre
Brian Schnarre

Duane Schiermeier
Candace Schiermeier
Glosemeyer

Ronald Webbink
Gregory Webbink
Mark Webbink
Ann Webbink McKee

Leon Becker
Bruce Becker
Janice Becker Held
Douglas Becker

Homer Becker
m. Verna Gosejacob
April 4, 1946

Mildred Becker
m. Ora Schnarre
June 30, 1936

Esther Becker
m. Erwin Schiermeier
May 17, 1941

Eunice Becker
m. Harold Webbink
October 7, 1944

Harvey Becker
m. Laura Joerling
April 12, 1947

*Helene Laumeier & August
Becker Family
m. August 15, 1911*



with special thanks to

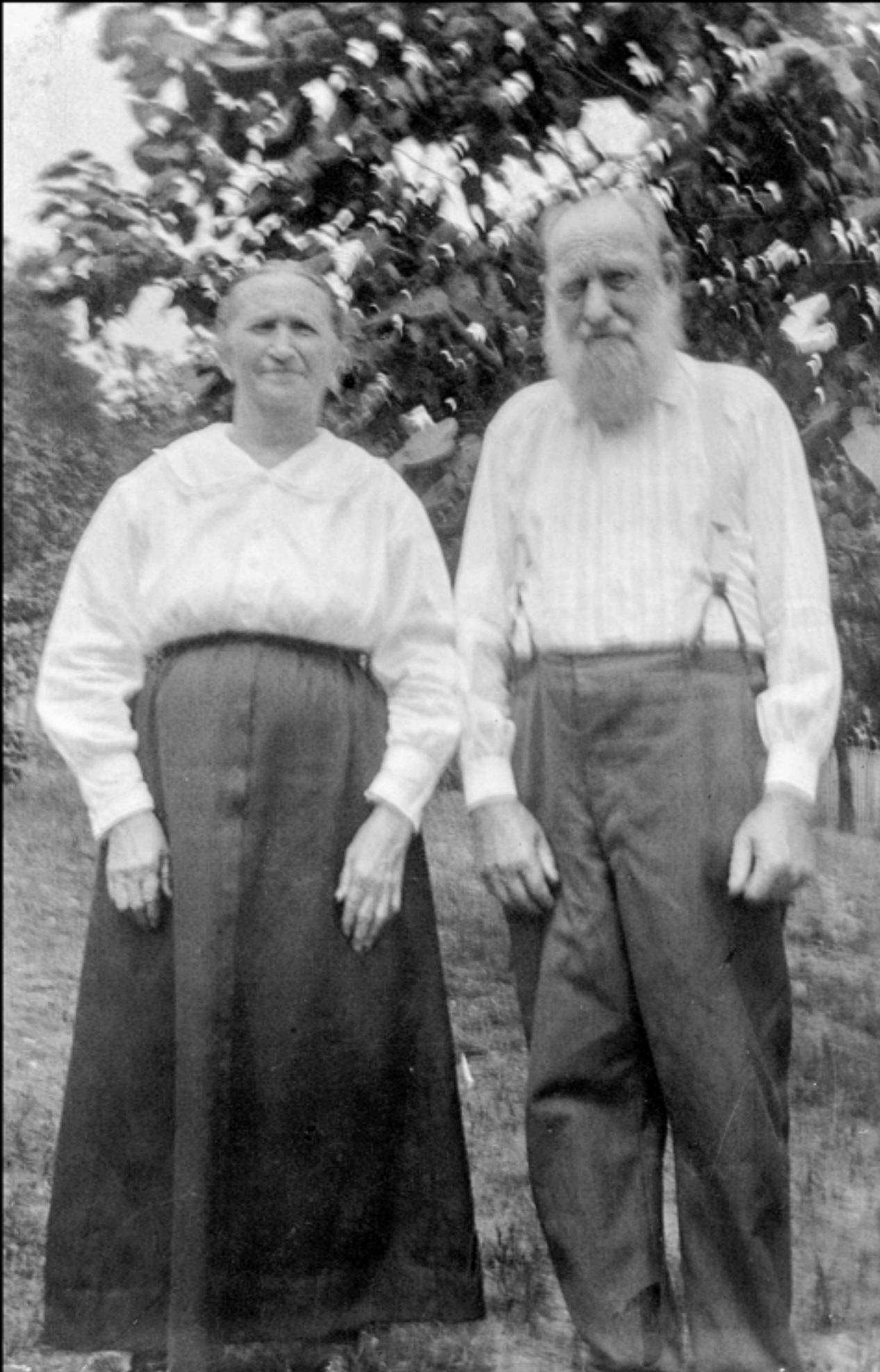
... Mildred, Esther, and Eunice for their love of family and photography - and for preserving both

... Pat Becker Reinhard, Janice Becker Held, Fran, Brian, and Keith Schnarre, Ann Webbink McKee, and Ken Becker, for assistance in captioning

... and most heartily Aunt Esther for her prodigious ability to recall the names of family, friends, and classmates of nearly a century past.

Liz & Greg Webbink
March 2016

Esther Becker Schiermeier at her home on her 99th birthday
November 8, 2015



**Johanna Niendieker & Henry Laumeier
Helene Laumeier Becker's parents**



**Anna Catherine Stroh & Johan Casper Becker
August Becker's parents**



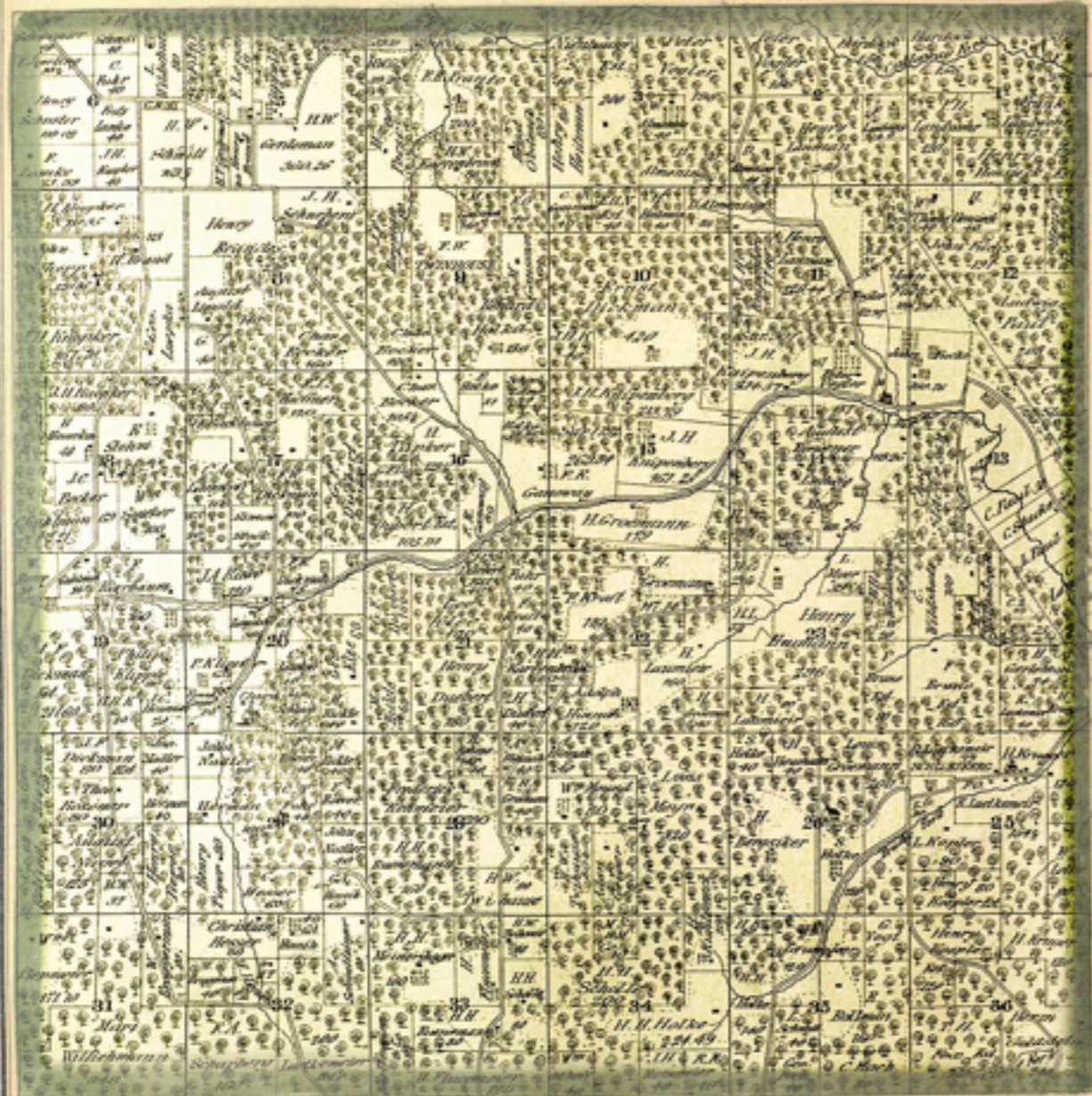


Homer, Esther, and Mildred, 1917



August and Helene, August 15, 1911

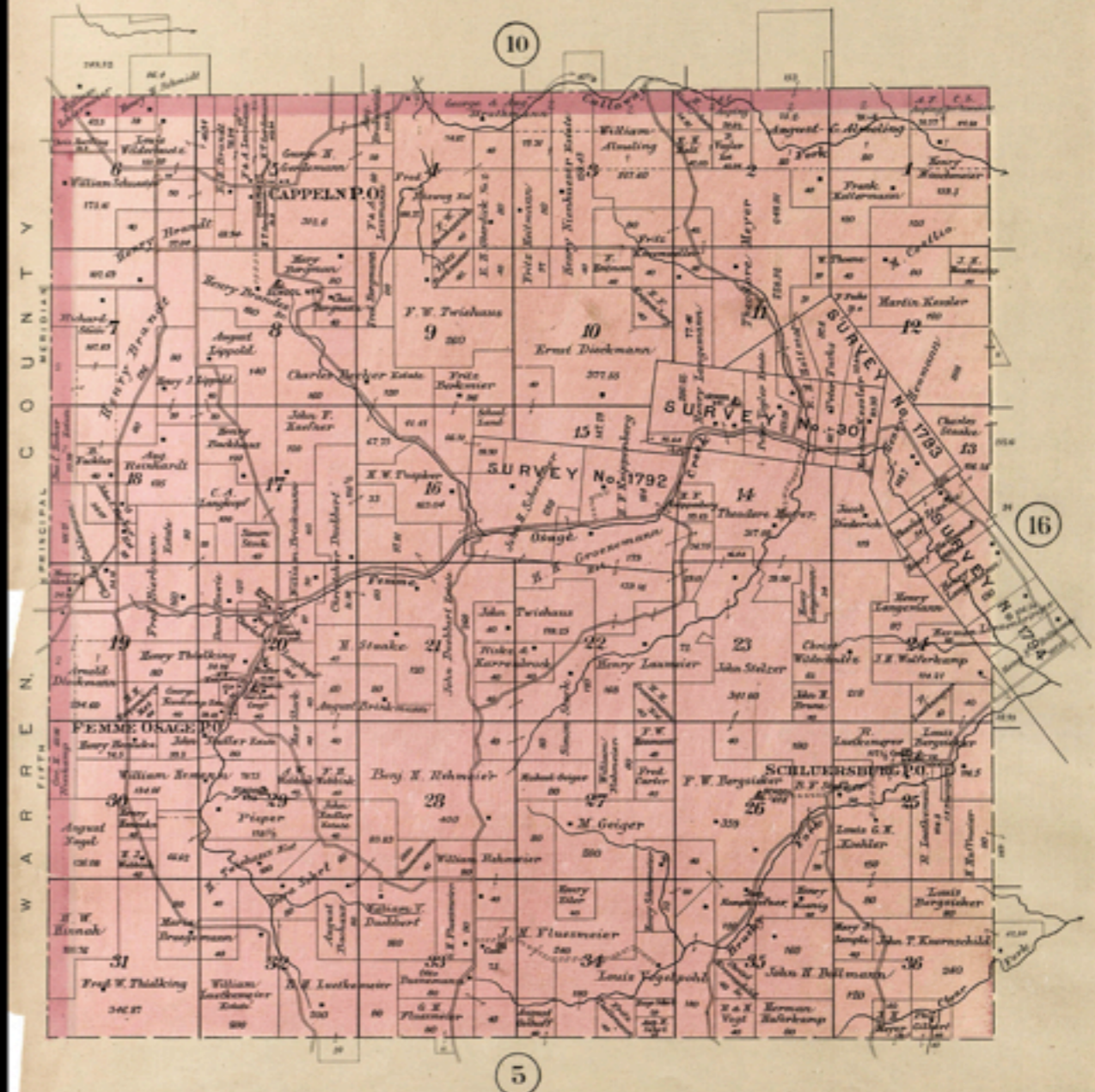
Township 45 North
Range 1 East
of 5th Principal Meridian



1875 Plat Map
Illustrated Atlas Map of St. Charles County, Mo.
p44 - Femme Osage

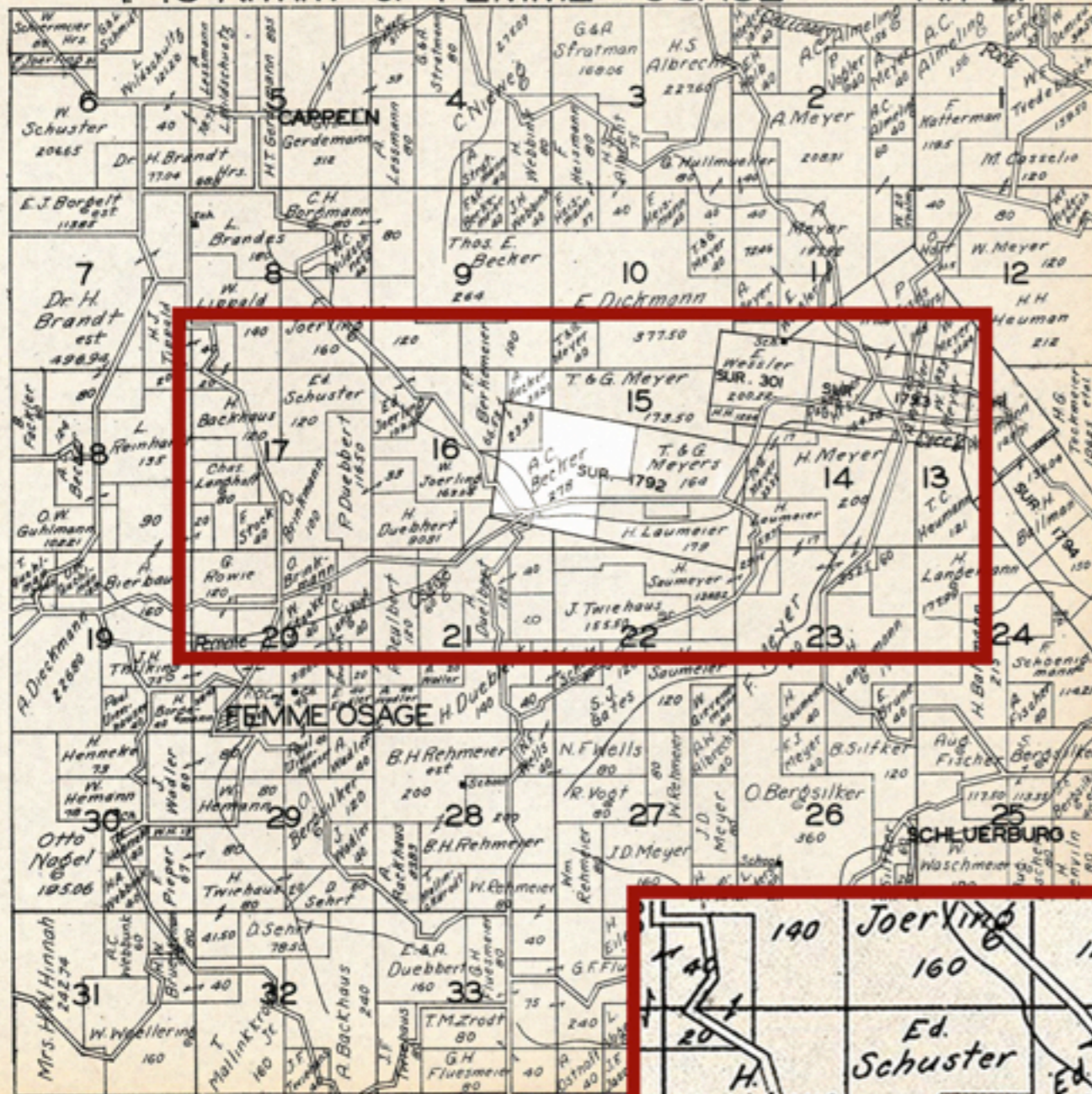
TOWNSHIP 45 NORTH RANGE 1 EAST
of the 5th Principal Meridian.

Scale 2 Inches to the Mile.



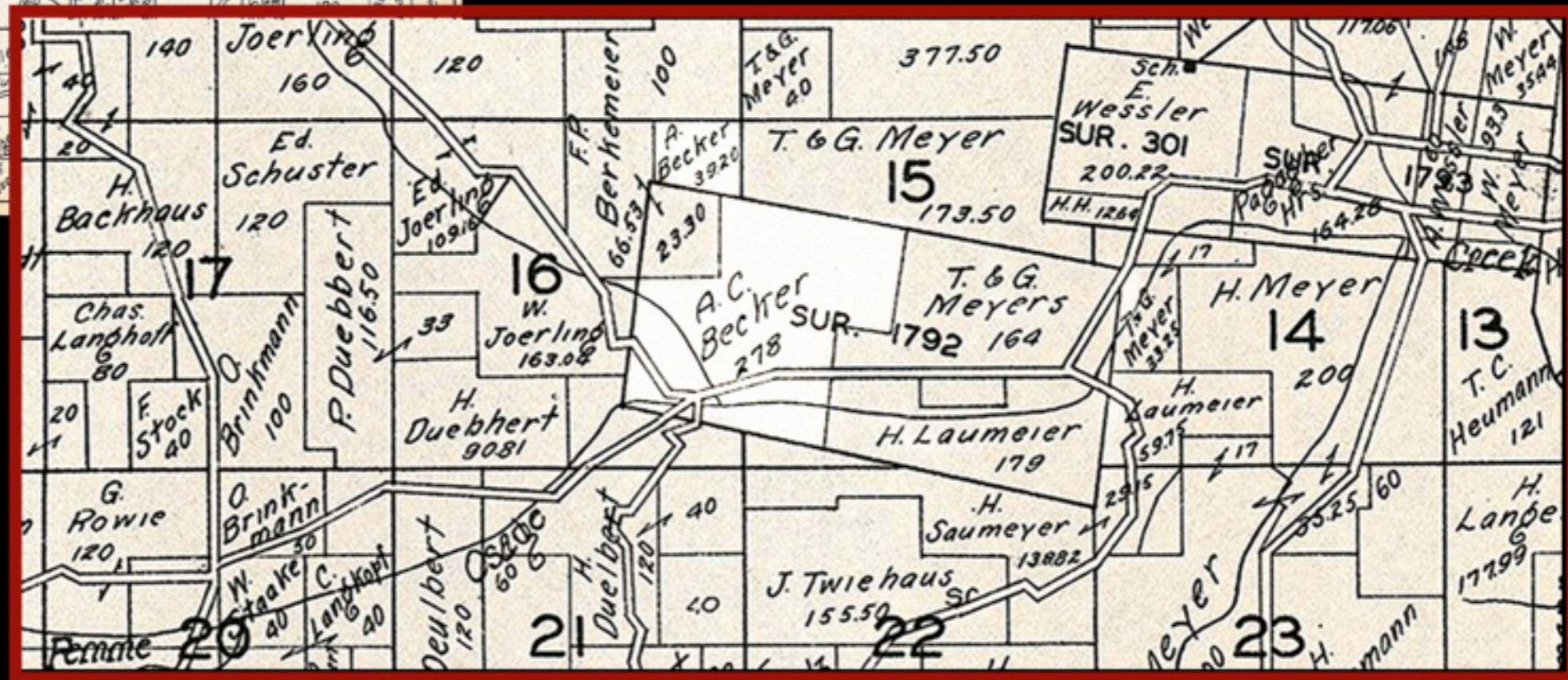
1905 Plat Map
Book of St. Charles County Missouri
p8 - Femme Osage - Cappeln

T 45 N. PART OF FEMME OSAGE R. 1 E.



1930 Plat Book
of St Charles County, Missouri

highlighting August Becker Farm below





"...not sure, but I think it's Mildred, Eunice and Esther on fence at the straw pile." (EstherS)



Mid-1920's: Mildred, Homer, Esther, Eunice, and Harvey



Eunice, Esther, Mildred, Harvey, and Homer circa 1926



TOP ROW: Homer, Harvey, and Grover Becker
BOTTOM ROW: Mildred, Eunice, Mabel Becker, and Esther
August Becker Farm, Femme Osage Creek Road
"Grover and Mabel were our cousins" (EstherS)



August Becker Farm - where Leon & Joey Becker now live - Femme Osage Creek Road Bought from John Schemmer and previously known as the Gannoway farm (EstherS)



Eunice, Esther, and Mildred, circa 1922, "Milk Maids" (EstherS)

Femme Osage Church



TOP RIGHT: Paul & Nienhuser Store in Femme Osage. "Dale Schnarre's mother, Myrtle, grew up there because the two families lived there together and ran the store. I think she was a Nienhuser. Myrtle is still living at 100+ years." (FranS)
BOTTOM RIGHT: Femme Osage Church School House. Our parents went to school there; later used for Confirmation and Bible School. First church cemetery at the right. (EstherS)



Femme Osage Band



BACK ROW: Tallest - Esther, then Eunice, and Eleanor Laumeier;
Harvey in front of Esther, Pearl Rehmeier, Marvin Meyer, at Vine Hill School
"Looks like we were in a play." (EstherS)



At Laumeier Rock House, after Grandpa Laumeier's funeral

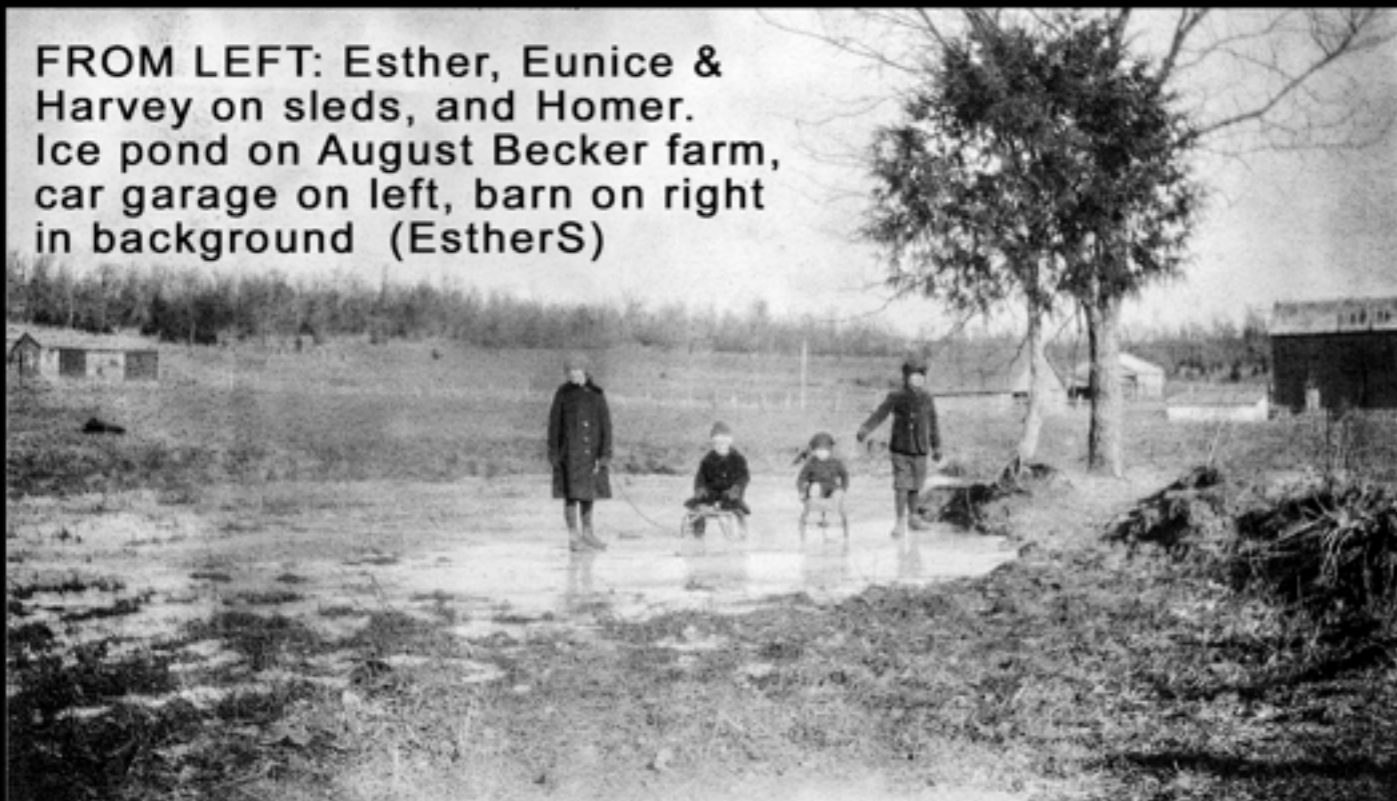
FRONT ROW: Anna Laumeier Wulfekammer, Helene Laumeier Becker, Hilda Laumeier Engelage, Clara Laumeier Heman
BACK ROW: August Laumeier, Julius Laumeier, Charley Laumeier, Edwin Laumeier (EstherS)



The Beckers in front of Grandma Anna Catherine Stroh Becker's House (EstherS)
FRONT ROW: Grover, Wilbert, Eunice, Esther, Mabel, Homer, Oscar
2nd ROW: Helene, Harvey, Tilly, Grandma Anna Catherine Stroh Becker, Meta, Bertha
3rd ROW: Lillian, Hulde, Mildred, Theodore 4th ROW: Charlie, Edwin, Paul, August

Threshing Wheat "This may have been along Femme Osage Creek.
The machine was run by 2 steam engines; 3 horse- or mule-teams hauling wheat bundles.
They moved from farm to farm." (EstherS; KenB)







Darlene Heman Bade & Maynard Heman whose mother Clara Laumeier was Helene Becker's sister. The Laumeier farmstead stone house on Femme Osage Ridge Road was where Helene grew up. Clara married Elvin Heman and they then lived there taking care of Helene and Clara's parents – Grandma & Grandpa Laumeier. Elvin Heman built the straw hen house. (Esther)



Homer on his new tricycle. August Becker Farm. PatR has original of photo. (EstherS; PatR)



Homer, Harvey, and the dogs (EstherS)



Eunice Nahm behind milk cans, Alverta Sanders Nienhueser under wagon, Mildred behind dolly, train station, Augusta, MO (EstherS)



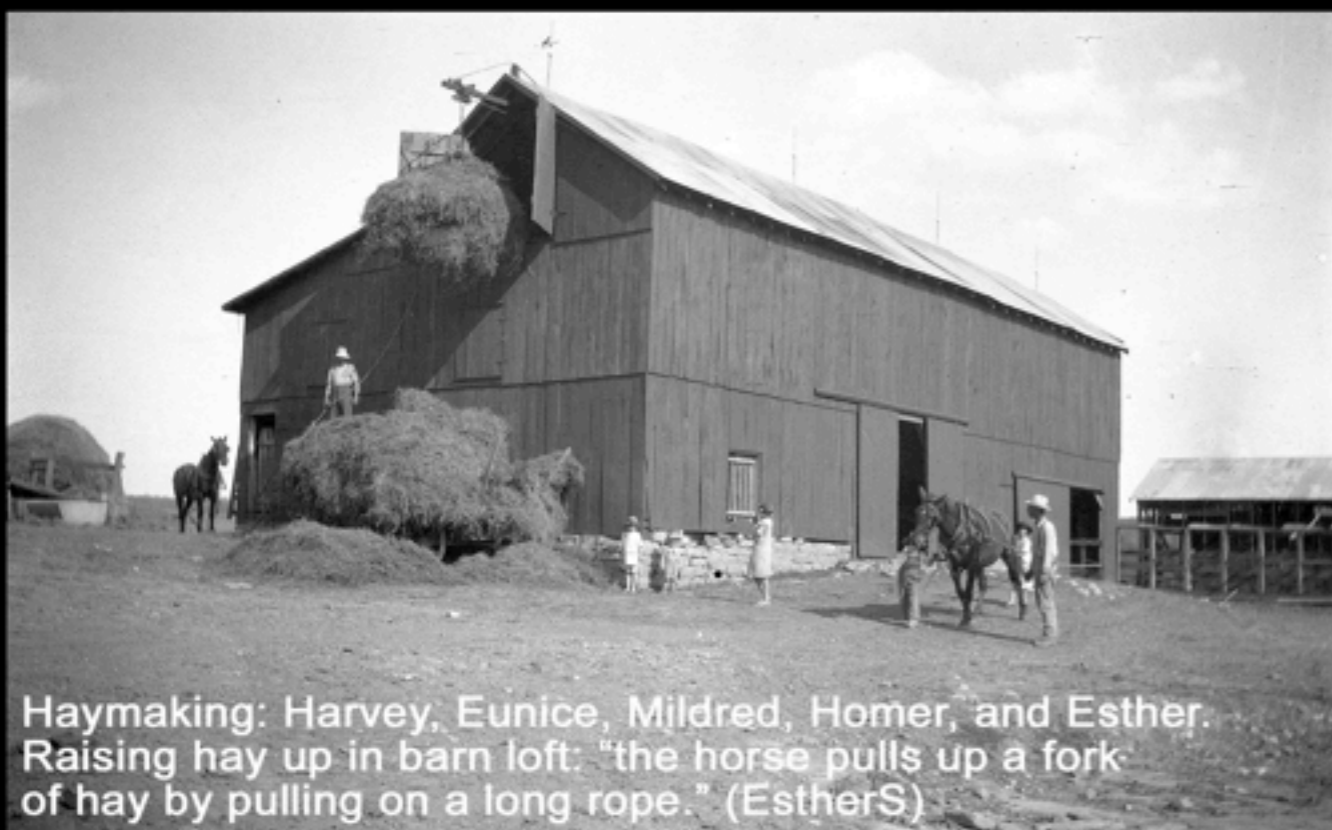
TOP LEFT: Blondina Gosejacob, Helene and Ken Becker, Homer Becker Farm on Femme Osage Creek Rd (PatR)

TOP RIGHT: Esther stirring the apple butter pot. "All day cooking on hot fire - taken in the chicken yard & back yard, peach tree in background." (EstherS).

BOTTOM LEFT: "Eunice giving Neal a wheelbarrow ride at Grandma Becker's home." (EstherS).

BOTTOM RIGHT: Beverly Wulfekammer, Neal Schnarre, & Max Wulfekammer maybe taken on Ora & Mildred's place (EstherS, PatR)

RIGHT: August Becker Farm, Windmill on hillside in back of farm. "My dad put a windmill far up on the hill in back of the house so that when the windmill runs, it pumps water up into a reservoir. From this reservoir, it went down to the house for kitchen, laundry etc. and to the barn for cattle." (EstherS)
BELOW: circa 1920. August Becker Farm, Crushing lime rock to spread on fields (EstherS; KenB)



Haymaking: Harvey, Eunice, Mildred, Homer, and Esther.
Raising hay up in barn loft: "the horse pulls up a fork of hay by pulling on a long rope." (EstherS)

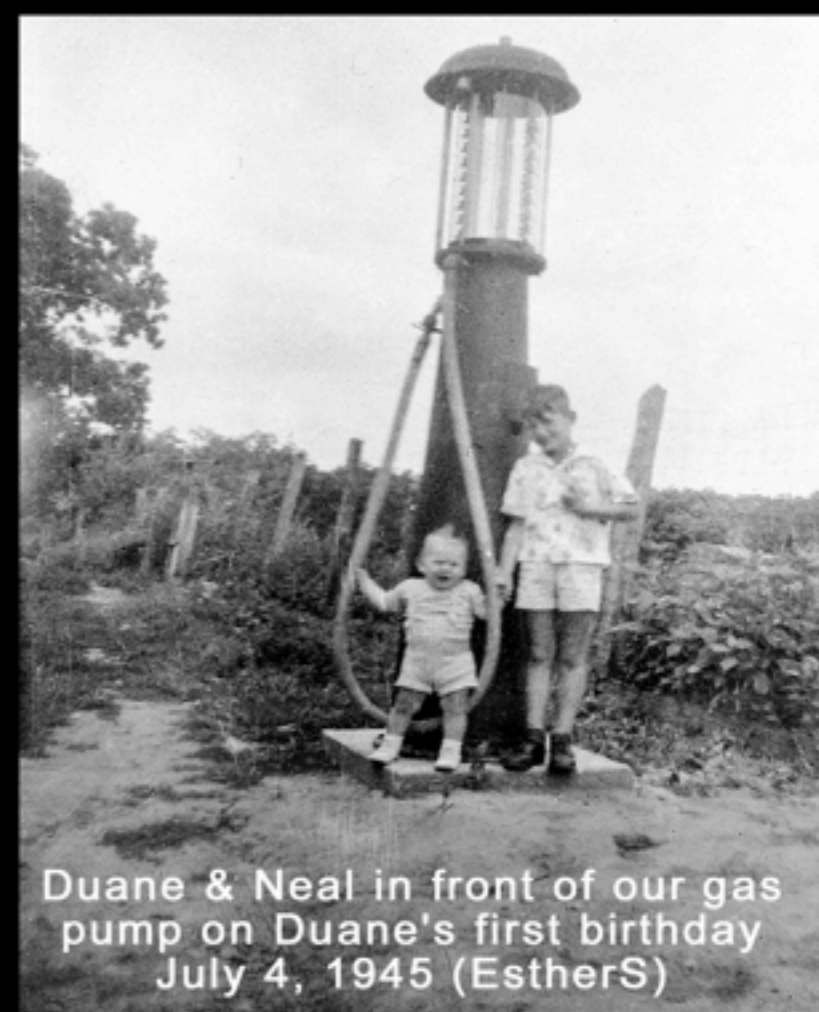
Homer with the Becker's first tractor. (EstherS)





August Becker Farm from hill behind

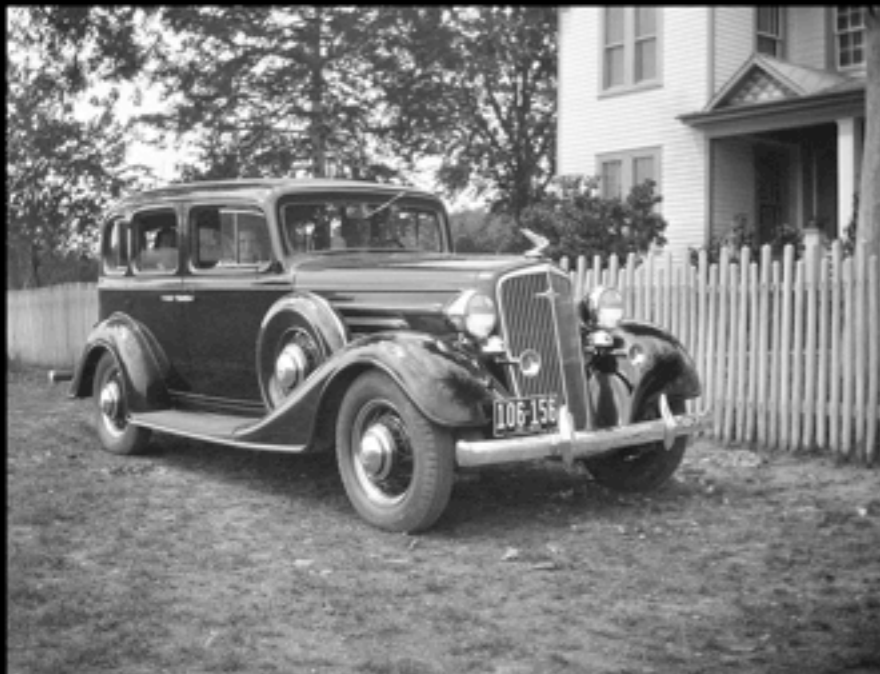
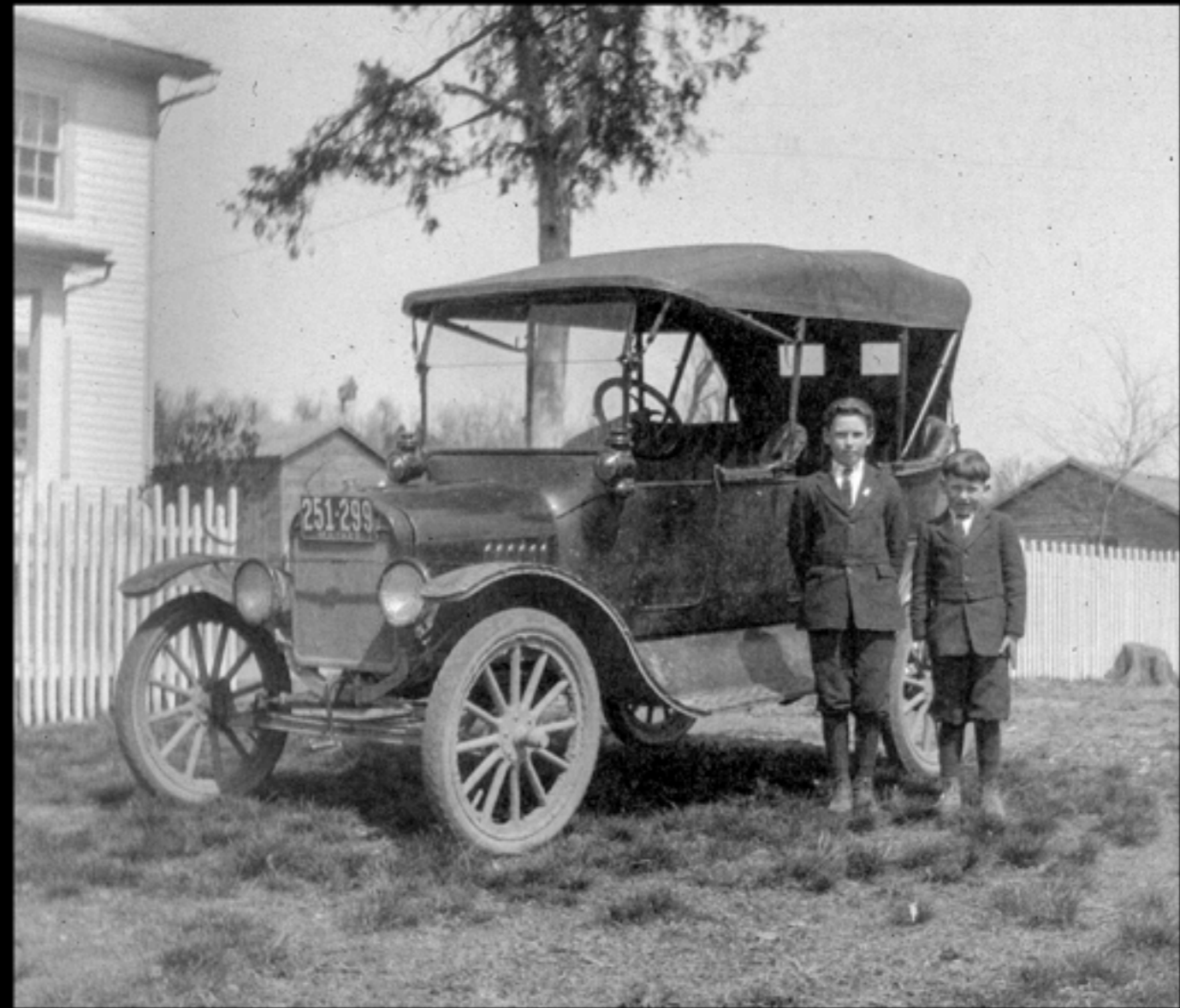
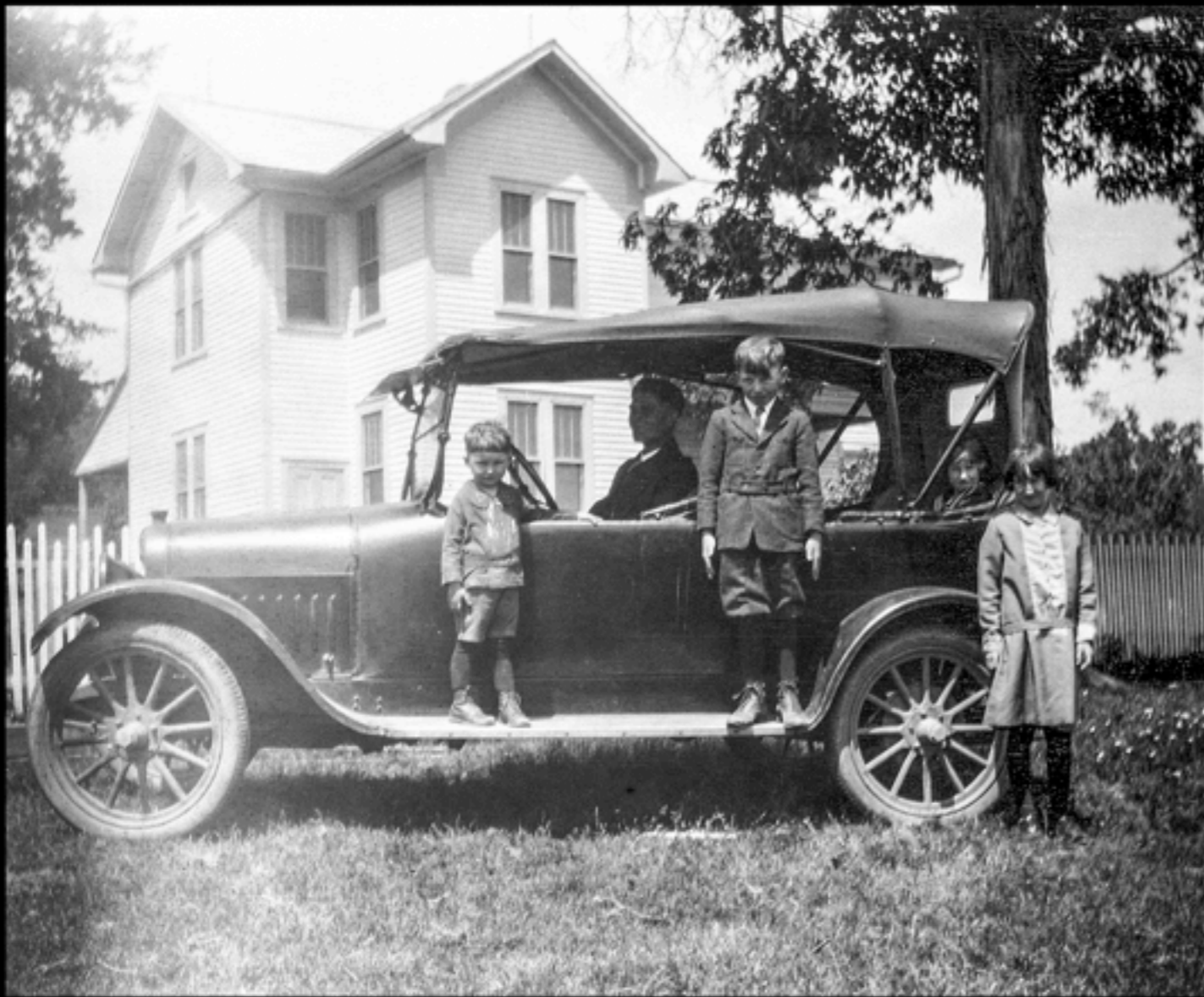
Another early tractor used on Becker farm.
Here Harvey is driving it. (EstherS)



Duane & Neal in front of our gas
pump on Duane's first birthday
July 4, 1945 (EstherS)



BOTTOM: Esther, Verna, Corinne Paul Bade, Eunice, Lucille Meyer Steinhoff,
and Doris Holt Meyer, Femme Osage E&R Church, Church Picnic (EstherS, PatR)
INSET: Ruby Wessler, Esther, Lucille Meyer, and Eunice, last day of school for Wessler (8th grade)
and others (7th grade), in the background woodshed and Vine Hill Grade School (EstherS)



TOP: 1925 or earlier, August Becker Farm, Car is a 1918/19 Studebaker Light Four. TOP LEFT: Behind steering wheel: August; On running Board: Harvey & Homer; In back seat: Eunice; At rear wheel: Esther. (EstherS). TOP RIGHT: Grover Becker & Homer (cousins) BOTTOM LEFT: 1934 Chevrolet Master Sedan Front seat: Eunice and Homer; Rear Seat: Esther. BOTTOM CENTER: "Harvey and his little truck hauling fire wood." (EstherS) BOTTOM RIGHT: "Ora, Neal & Harvey at Mildred & Ora's home, where Pat & Jerry Reinhardt live now." (EstherS)



BACK ROW: Walter Mallinckrodt, Russell Webbink, Edgar Meyer, Alvin (Pete) Jurgensen, Harvey, Harold Webbink
FRONT ROW: Ervin Schiermeier, Walter Bade, Charles Bade, Frederick (Chub) Bade, Homer, Roland Meyer
"Dad [Homer] was manager of the team and also the catcher. Dad said on Sundays, they played ball all afternoon." (PatR)



STANDING: Dorothy Welge, Delores Luetkemeyer, Darleen Heman Bade, Hildegard Nadler, Alma Bade Mallinckrodt, and Esther.
SITTING: Ella Schemmer, Corinne Paul, Doris Holt and Eunice.
"We played on Sunday afternoons with Augusta and Defiance teams. We were in High School." (EstherS)



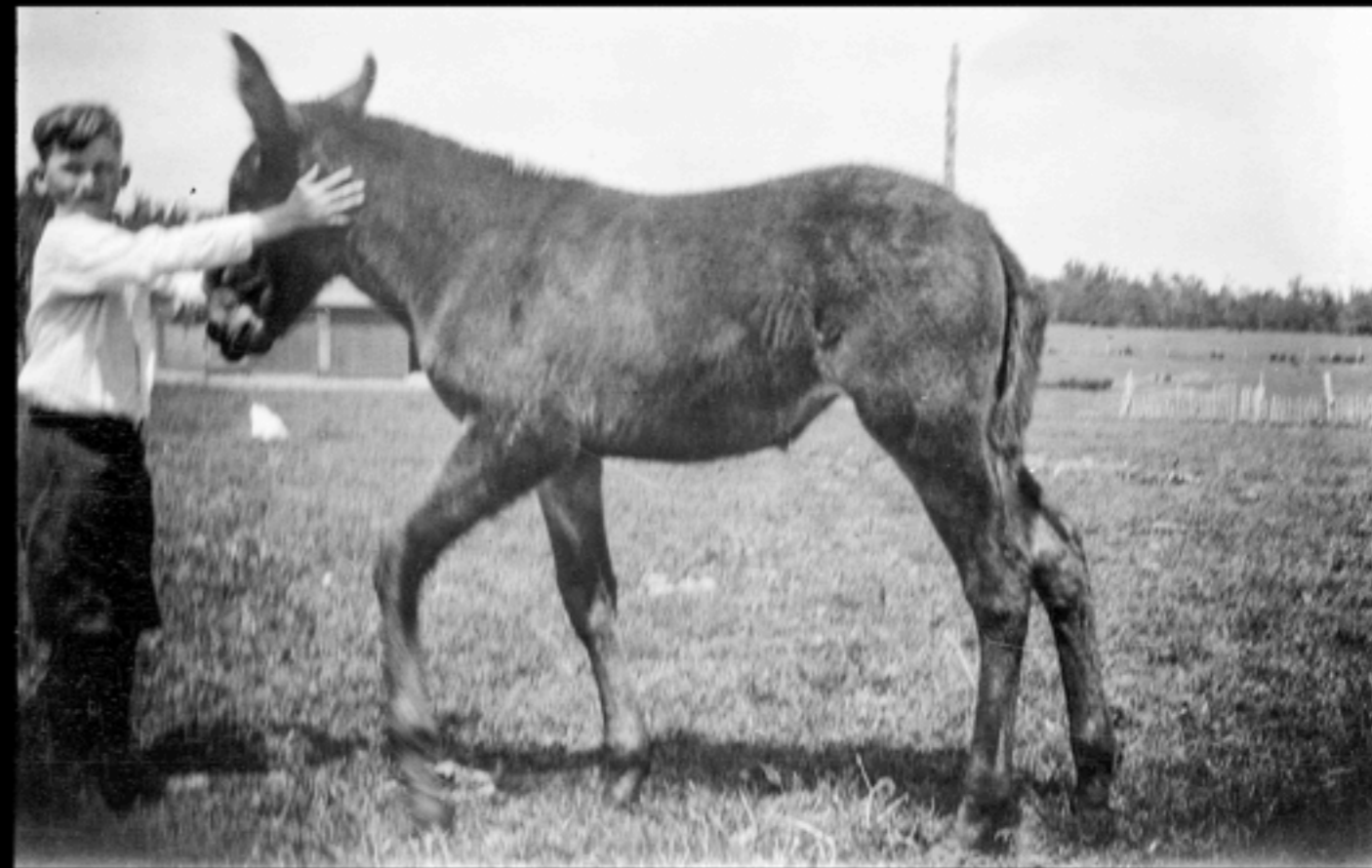
"After wheat threshing was over, there was always a thresher picnic. Women serving lunch. Whole families came to this picnic. Taken on Warren Rehmeiers farm on Hwy F and Femme Osage Creek Road near August & Helene's last home. Standing in foreground on the right is Elsie Wessler." (EstherS)



"Taken the night Homer's barn was on fire. Hay got too hot in the hay loft. Women served some food."
Grandpa Becker in front of the truck, Harvey behind him, and Ervin to Harvey's left
with other men that came to help put out the fire. (EstherS, PatR)



"Homer Becker & Edgar Meyer brought cold water to men working in the field, loading wheat bundles on wagons." (EstherS)



Homer and young mule colt.
"August Becker raised baby horses." (EstherS)



Cows in barn lot in front of "Hay Stack". When threshing, they blew straw on a pile in the lot to use in the barn, when needed. (EstherS)



Fat bull on barn lot,
August Becker Farm on Femme Osage Creek Rd (EstherS)



Neal & Grandpa Becker's goat (EstherS)



Fat hogs - ready for market. (EstherS)

Neal with pet calf on Schnarre farm (EstherS)



Sheep barn and lambs on the Laumeier farm (EstherS)



Mildred on Left



MILDRED

CENTER: Confirmation Class, 1927, Femme Osage Evangelical Church. Adelia Joerling, Josie Juergensen, Mildred
TOP LEFT & RIGHT: Mildred, Eunice Nahm, Alverta Sanders Nienhueser, near school, Augusta, MO (EstherS)
BOTTOM RIGHT: on the cistern in backyard of August Becker farm (EstherS)

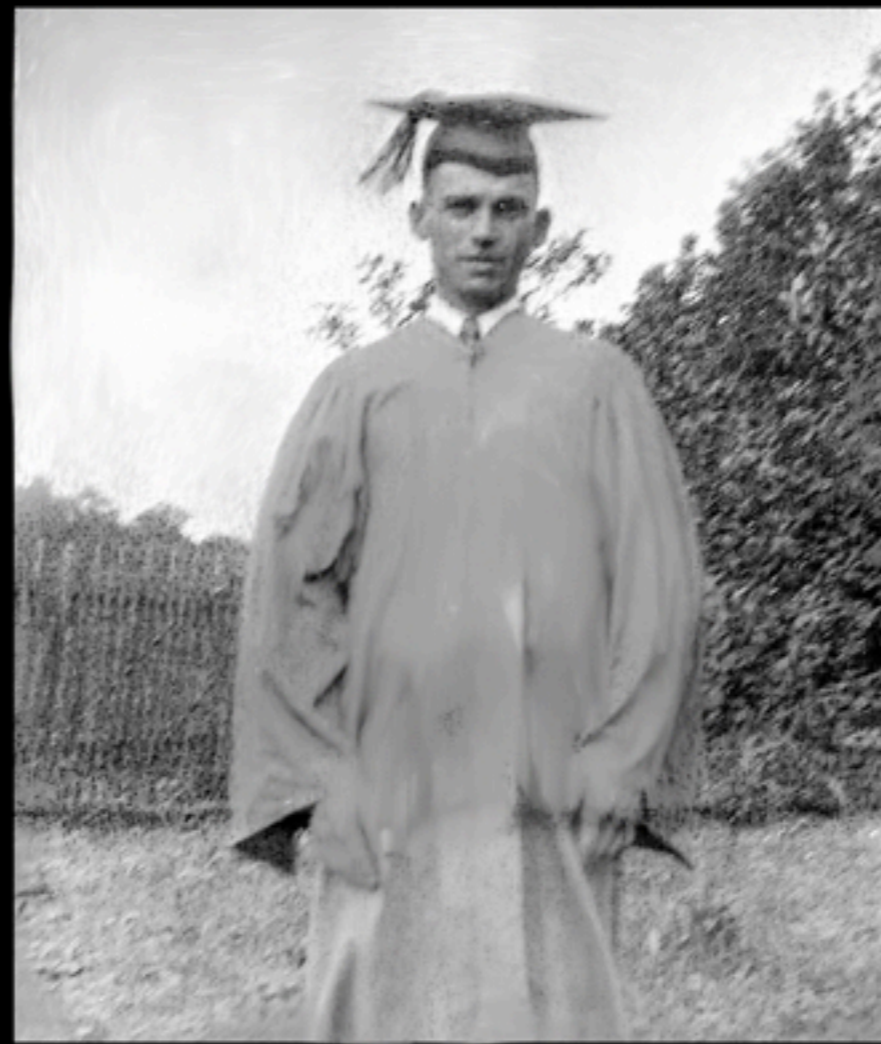


MILDRED

TOP LEFT: Alverta Sanders Nienhueser on Left, Mildred on Right.

TOP RIGHT: Mildred, Alverta Sanders Nienhueser, Unidentified, Eunice Nahm

BOTTOM LEFT: Mildred and friends on a Sunday afternoon. *Standing* - Mildred, Adelia Joerling Welge; *In front* - Elsa Joerling, Erna Meyer Schuedser, Alice Welge. **BOTTOM CENTER - Mildred at "Laumeier Farmstead stone house, Femme Osage Ridge Road where Helene Laumeier Becker grew up and later Heman's lived there." (EstherS)**



HOMER

TOP CENTER: Graduation from Augusta High School circa 1932. BOTTOM RIGHT: Harvey Paul, Hyman Holt, Walter Mallinckrodt and Homer, Palm Sunday, April 13, 1930, Femme Osage Church, Confirmation Class (PatR)



ESTHER

TOP: Left - Esther holding Duane taken in backyard at August & Helene's home (EstherS); Center - with pet cow (EstherS) Right - in the dress worn at Mildred's 1936 wedding. BOTTOM: Esther, third from Right, "Basketball players at Augusta High School" (EstherS)



ESTHER & EUNICE

TOP: Left - "all dressed up. Center - "August Becker Farm, on front door steps with our dolls & doll buggy"

Right - "Ready to go and play softball. We were in High School."

BOTTOM: Left - Confirmation 1931. Center - "in the snow". Right - "in front of flowers on Mom's porch in backyard" (EstherS)



EUNICE & ESTHER

TOP: Center - High School graduation picture. Right - "Esther & Eunice (again) dressed in new clothes in front of August & Helene's home." (EstherS)

BOTTOM: Left - Esther, second from Left; Eunice, far Right. Right - "Aunt Anna Laumeier Wulfekammer, Cousin Alice Laumeier, Eunice and Esther. Taken on bluff on Femme Osage Creek Road at August Becker Farm." (EstherS)



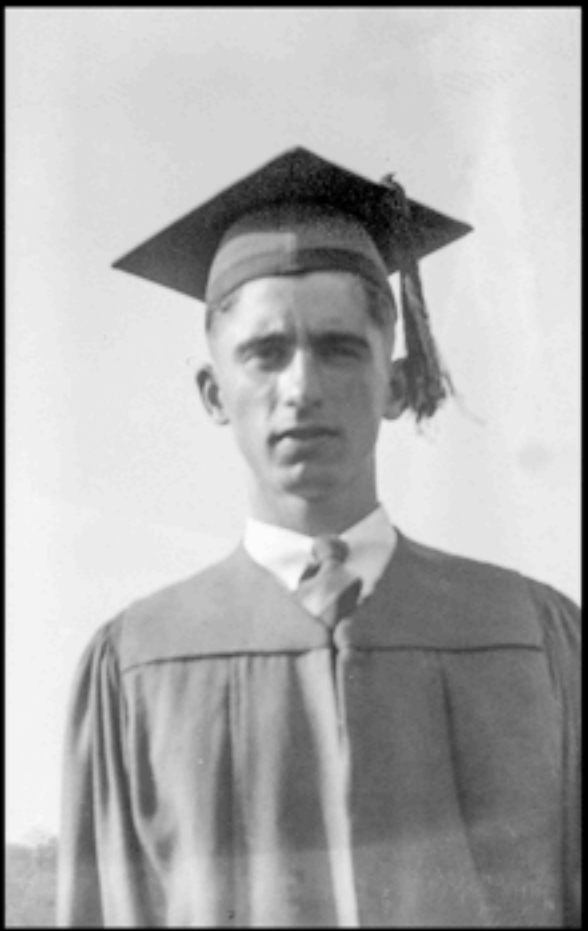
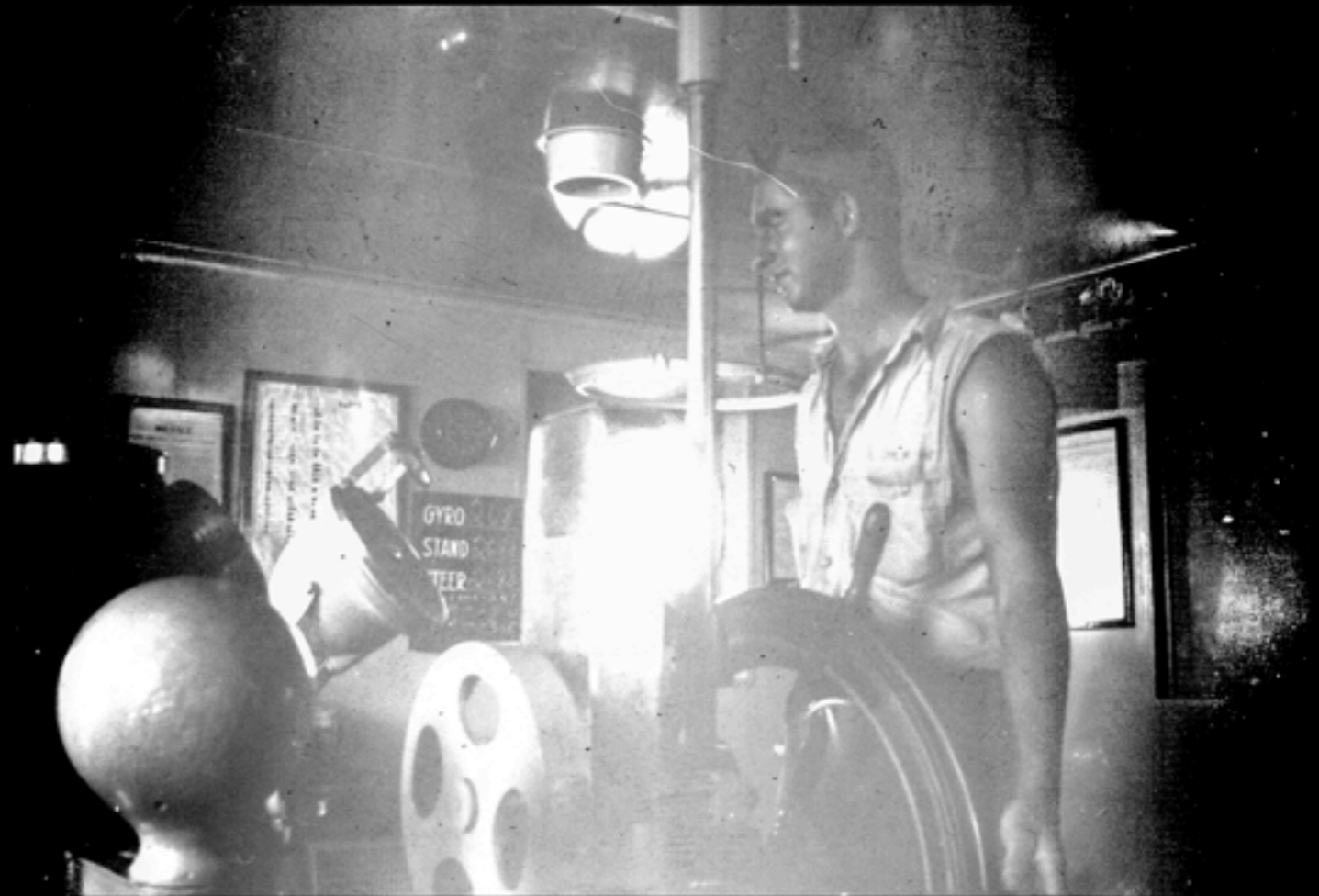
EUNICE

TOP: *Center* - Elsa Webbink Neylon, Eunice, Eloise Webbink Wray, August Becker Farm, Harold & Eunice's Wedding Day, October 7, 1944

BOTTOM: *Left* - Eunice & Doris Holt, "Basketball players at Augusta High School" (EstherS)

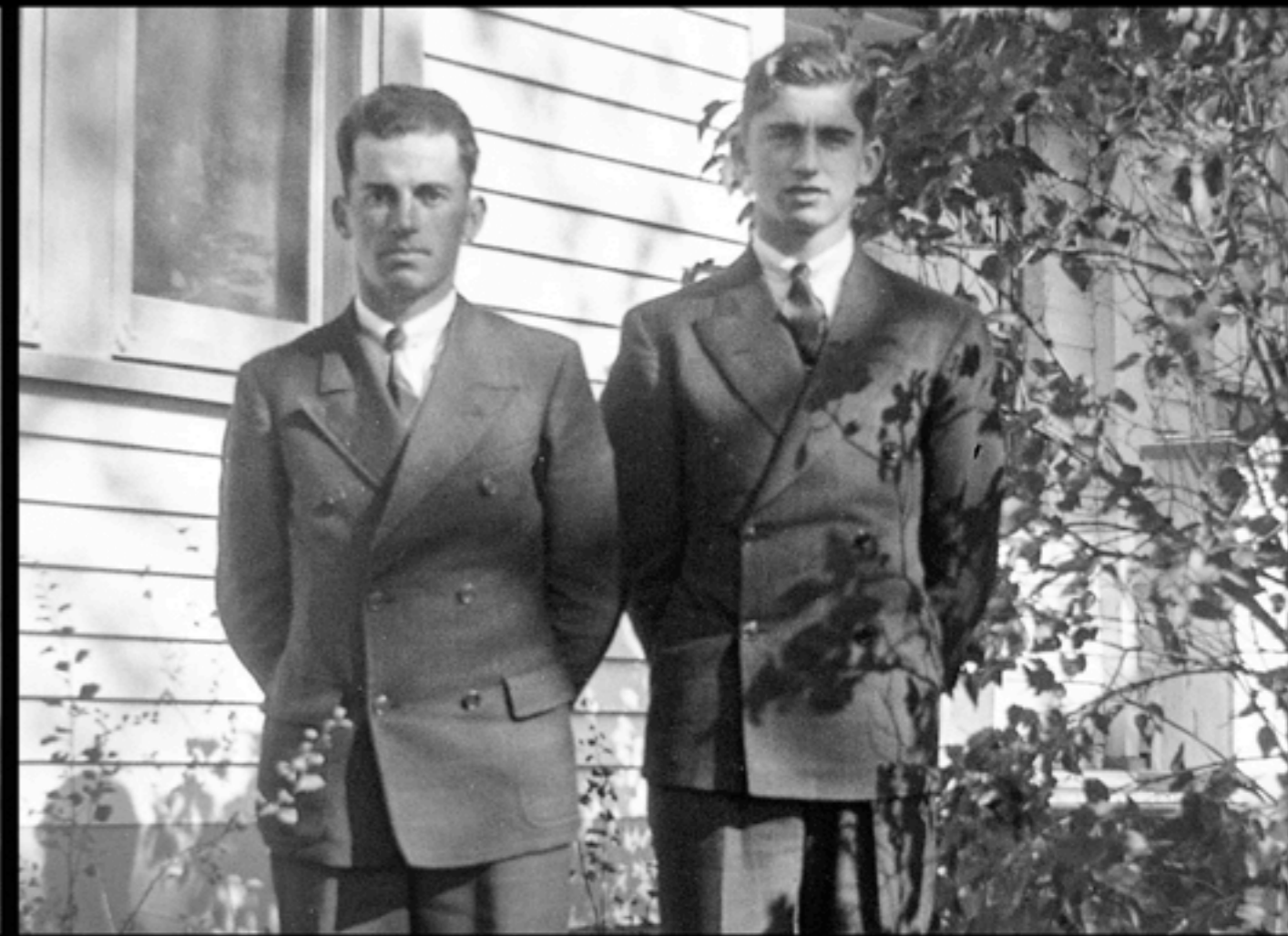
Center - Eunice & Harold Webbink, Frederick Webbink Farm, Hwy T (GregW)

Right - Eunice & Doris Holt (EstherS)



HARVEY

TOP: Left - Harvey Becker in center; to his left is Roland Meyer who "lived just east of the Beckers in the two-story house that sits close to the road up on the hill. The barns are close to the road also" (JaniceH) Center - Harvey at the helm; Right - Harvey's ship, Sackett's Harbor
BOTTOM Left - circa 1928-29, "in the woods around home (original August Becker farm), Bow & arrow was a Christmas gift. Center - Harvey about 6-7 years old." (EstherS). Right - Graduation from Augusta High School, circa 1939.



BECKER SIBLINGS

TOP: Left - Esther, Mildred, and Eunice. Right - Homer and Harvey

BOTTOM: Left - Homer and Harvey. Right - Eunice, Mildred, and Esther



Ora & Mildred Wedding Day, June 30, 1936
Herbert Schnarre, Ora Schnarre, Mildred and Esther
in church parsonage. (Frans)





**ABOVE: The backs of Esther's & Eunice's dresses, (EstherS)
BELOW: Ervin & Esther's Wedding Picture (EstherS)**



**ABOVE: Harry Schiermeier, Ervin, Esther, and Eunice; Ervin & Esther's Wedding Picture, May 17, 1941 at August Becker home (EstherS)
BELOW: Wedding cake made by Anna Schiermeier (Emil S. wife) at August Becker home (EstherS)**



Eunice & Harold's Wedding, October 7, 1944
August Becker Farm



Luella Mallinckrodt Webbink, Frederick Webbink, Harold and Eunice,
August Becker, Helene Laumeier Becker, (GregW)



Harvey Becker, Eloise Webbink Wray,
Eunice and Harold



Homer, Verna, Esther Thilking and Harvey, Homer & Verna Wedding Picture, April 4, 1946
Taken at Verna Gosejacob's home in Femme Osage (EstherS)



Harvey & Laura's Wedding, April 12, 1947.

From Left: August & Helene Becker, Harvey Becker and Laura Joerling Becker, John & Ida Joerling (JaniceH; GregW)



"Homer & Verna, Esther & Ervin, and Alvin Jurgenson (& his date, Eunice taking picture) before they were married.
We went to a cave at Missouri Caverns on a Sunday afternoon." (EstherS)



ABOVE: Eunice left some ninety envelopes with negatives of the photos reproduced here. Many benefited from current digital enhancement technology, but many more were of surprising quality in their original format and displayed wonderful composition attributable to much earlier technology and Eunice, Esther, and Mildred's enthusiasm for photography.

LEFT: CLOCKWISE FROM TOP: Neal Schnarre, Duane Schiermeier, Ron Webbink, Keith Schnarre, Easter 1948, August Becker Farm at eastern end of Femme Osage Creek Rd where he and Helene moved,

"Those steps are by the house where you come out of the basement. They must have just moved there when this picture was taken. The dirt around the stone looks like they did some work there. Driveway went to the basement. They butchered hogs outside: the women stuffed sausage on tables in the basement." (PatR)

Becker Family Gathering, August Becker Farm, eastern end of Femme Osage Creek Rd where August and Helene moved.

FOREGROUND: Maynard Heman (scratching head), Ora Schnarre on left chair, Harold Webbink on right chair, Homer & Harvey Becker to right on ground.
BACKGROUND: August Becker in white shirt with Ervin Schiermeier at his left. (GregW, EstherS)





FROM LEFT: Martha Thilking, Johanna Sehrt, Amelia Joerling, Esther Schiermeier, Lize Meyer, Tilly Becker, Olga Sehrt, Helene Becker, and Myrtle Schnarre. "Femme Osage Church Fellowship Hall, Quilting in the original hall. It was added on and remodeled several times later. Myrtle was Ora's sister-in-law, married to Herbert, Ora's older brother who died in 1945. She is still living in Washington, MO, at the age of 105 as of 5/31/2015. Myrtle broke Helene Becker's record for the oldest living member of Femme Osage Church." (PatR; KeithS)



Neal hunted Easter eggs at
Grandma & Grandpa's house
(EstherS)



Back - Duane Schiermeier, Neal, Dale & Keith Schnarre
Front - Leon Becker, Brian Schnarre, 3/5/1951, Ora Schnarre
Farm, Foristell, Neal's 12th Birthday (FranS, JaniceH)



Duane's 5th Birthday. Ron Webbink, Neal
Schnarre, Keith Schnarre, and Duane at
Schiermeier home, New Melle. (EstherS)



Ron Webbink & Keith Schnarre -
birthday party at Schnarre farm
(EstherS)



Keith & Brian Schnarre, Duane Schiermeier, Greg & Ron
Webbink, 1951, August Becker Farm (GregW)



Celebrating Duane's 2nd Birthday
July 4th at Grandma Becker's home
(EstherS)



STANDING: Duane Schiermeier, Helene Laumeier Becker, Neal Schnarre and August Becker;
ON BENCH: Brian Schnarre in Keith Schnarre's lap, Leon Becker, Ken Becker, Greg Webbink in Ron Webbink's lap
Late summer 1949, August Becker Farm (EstherS)



TOP: Neal Schnarre; 2ND ROW FROM TOP: Keith Schnarre, Duane Schiermeier, Ronald Webbink;
3RD ROW: Brian Schnarre, Leon Becker, Ken Becker, Bruce Becker, Mark Webbink, Greg Webbink;
FRONT: Janice Becker Held, Patricia Becker Reinhardt, Candace Schiermeier Glosemeyer . "Taken at St. Johns Church at Cappeln, MO,
the Sunday Uncle Theo & Aunt Bertha Becker celebrated their 50th Wedding Anniversary in 1955; married August 17, 1905" (EstherS)



Helene and August Becker celebrating their 50th Wedding Anniversary; married August 15, 1911 (EstherS)
FROM LEFT AROUND TABLE: Mrs. Albers, unidentified, Helene, August, unidentified, Rev. Albers
Saturday or Sunday around August 15, 1961, Femme Osage Church (PatR)



Saturday or Sunday around August 15, 1961, Femme Osage Church, Grandpa & Grandma Becker's 50th Wedding Anniversary
FRONT ROW KNEELING: Ken Becker, Pat Becker Reinhardt, Brian Schnarre, Janice Becker Held, Candace Schiermeier Glosemeyer, Greg Webbink, Bruce Becker, Mark Webbink, Leon Becker;
MIDDLE ROW SEATED: Homer Becker, Mildred Becker Schnarre, Helene Laumeier Becker, August Becker, Eunice Becker Webbink with Ann Webbink McKee on her lap, Esther Becker Schiermeier, Harvey Becker with Doug Becker on his lap;
BACK ROW STANDING: Verna Gosejacob Becker, Ora Schnarre, Keith Schnarre, Neal Schnarre, Ron Webbink, Harold Webbink, Duane Schiermeier, Ervin Schiermeier, Laura Joerling Becker (PatR)

Helene Laumeier & August Becker Family



March 2016 - Greg & Liz Webbink